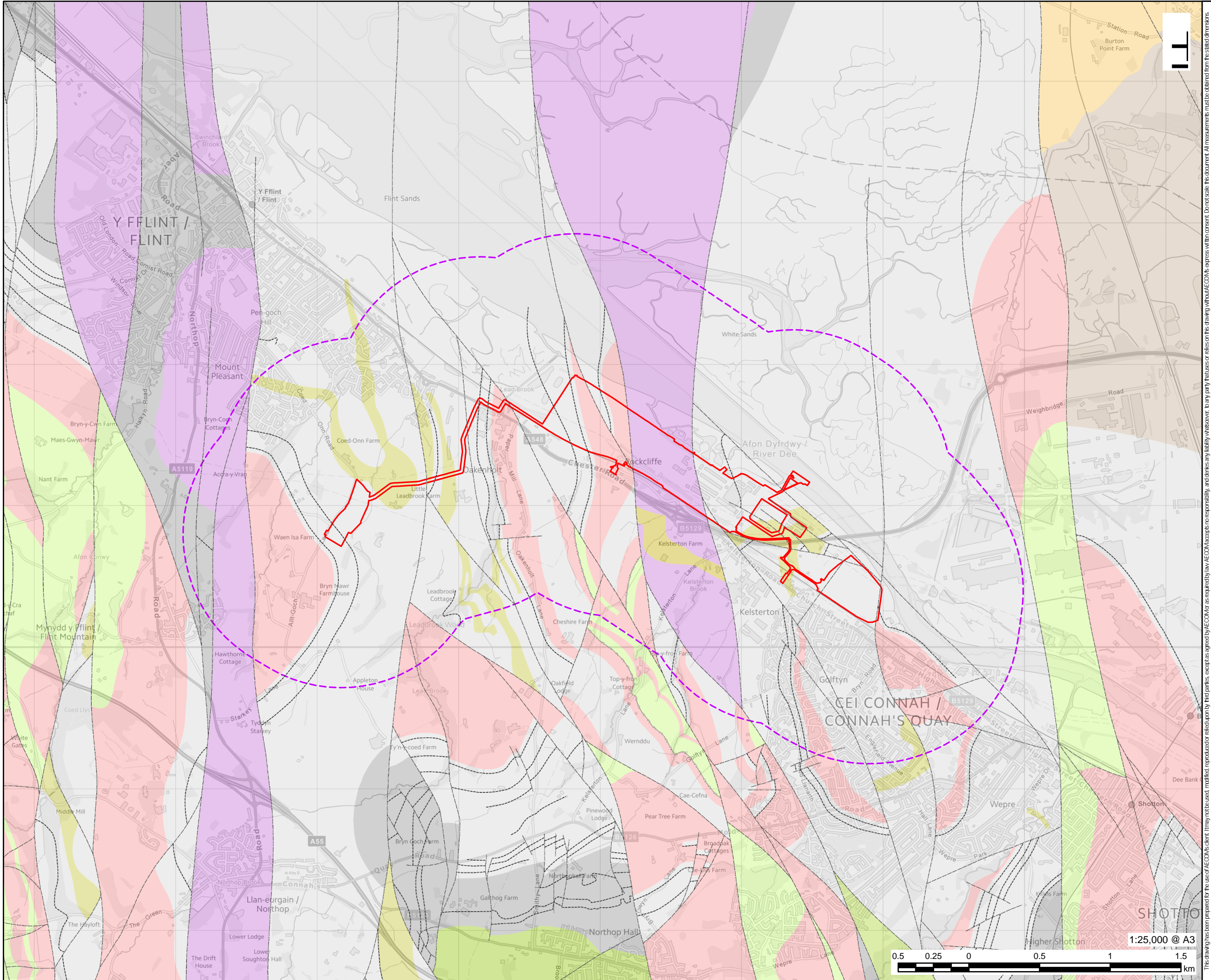


Connah's Quay Low Carbon Power

Environmental Statement Volume III
Figure 13-3: Bedrock Geology

Planning Inspectorate Reference: EN010166
Document Reference: EN010166/APP/6.3
Planning Act 2008 (as amended)
Infrastructure Planning (Applications: Prescribed Forms and Procedure) Regulations 2009 - Regulation 5(2)(a)
Revision 00

August 2025



PROJECT
Connah's Quay Low Carbon Power

CONSULTANT
AECOM Limited
The Colmore Building
Colmore Circus, Queensway
Birmingham, B4 6AT
www.aecom.com

- LEGEND**
- Construction and Operation Area
 - Study Area (1km Buffer of the Construction and Operation Area)
- BGS 1:50k Linear Features**
- Coal seam, inferred
 - Fault, inferred, displacement unknown
 - Marine band
- BGS 1:50k Bedrock Geology**
- PENNINE LOWER COAL MEASURES FORMATION - MUDSTONE, SILTSTONE AND SANDSTONE
 - ETRURIA FORMATION - MUDSTONE, SANDSTONE AND CONGLOMERATE
 - PENNINE MIDDLE COAL MEASURES FORMATION - MUDSTONE, SILTSTONE AND SANDSTONE
 - PENNINE LOWER COAL MEASURES FORMATION - SANDSTONE
 - GWESPYR SANDSTONE - SANDSTONE AND [SUBEQUAL/ SUBORDINATE] ARGILLACEOUS ROCKS, INTERBEDDED
 - BOWLAND SHALE FORMATION - MUDSTONE
 - PENNINE MIDDLE COAL MEASURES FORMATION - SANDSTONE
 - CHESTER FORMATION - SANDSTONE, PEBBLY (GRAVELLY)
 - HOLLIN ROCK - SANDSTONE
 - KINNERTON SANDSTONE FORMATION - SANDSTONE
 - ETRURIA FORMATION - SANDSTONE

NOTES
© Crown Copyright 2025. All rights reserved. Ordnance Survey Licence AC0000808122. Contains OS data © Crown copyright 2025. Contains British Geological Survey materials © UKRI 2025.

ISSUE PURPOSE
Environmental Statement

DATE
July 2025

PROJECT NUMBER
60717119

FIGURE TITLE
Bedrock Geology

FIGURE NUMBER
Figure 13-3